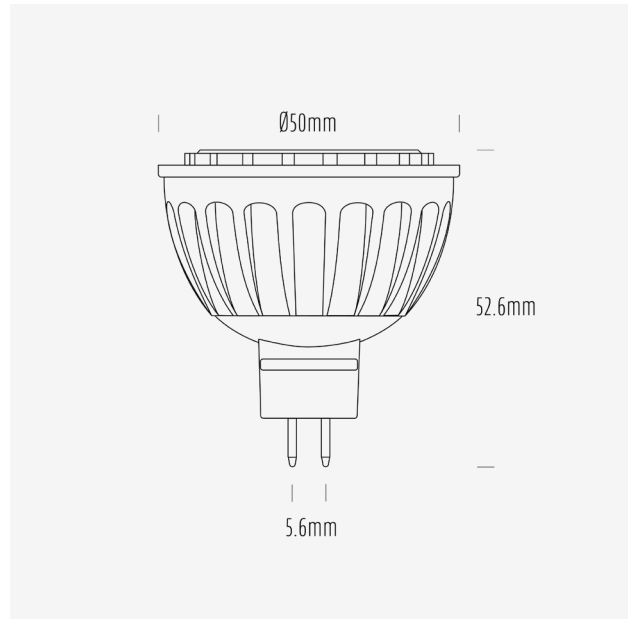


AGL 560 Series

MR16 LED Globes



AGL-560-30E60 / 3000K / MR16 / 60°



Product Data

Product Code	AGL-560-30E60
Description	Aqualux 560 Series LED Lamp
Type	MR16 GU5.6
Construction	Aluminium Heatsink + PMMA Optic
Warranty	3 Years

Electrical Data

Input Voltage Range	24V DC			
Nominal Voltage	24VDC			
Nominal Power	6W			
Nominal Current	250mA			
Input Voltage	-	-	24VDC	-
Rated Power	-	-	6.0	-
Operating Frequency	-	-	50Hz	-
Max. no. of lamps on AQD24-040	-	-	-	-
Max. no. of lamps on AQD24-100	-	-	-	-
Max. no. of lamps on AQD24-240	-	-	-	-
Dimming Compatibility	PWM (PSU dependant)			
Wiring Scheme	Parallel			
Startup Time	< 0.5s			

Mechanical & Thermal Data

Overall Length	52.6mm
Max Diameter	50mm
Lamp Base	GU5.6
Weight	55g
Operating Temp Range	-20° - 45°
IP Rating	IP20

Photometric Data

Nominal Flux (lm)	560			
Input Voltage	-	-	24VDC	-
Input Power (W)	-	-	6.0	-
Rated Flux (lm)	-	-	598	-
Efficacy (lm/W)	-	-	100	-
CCT	3000K			
CCT Description	Warm White			
CRI (Ra)	83			
CRI (R9)	8			
TM-30 (Rf)	84			
TM-30 (Rg)	97			
SDCM	-			
Peak Intensity (cd)	559			
Nominal Beam Angle	60°			
Measured Beam Angle (FWHM)	57°			

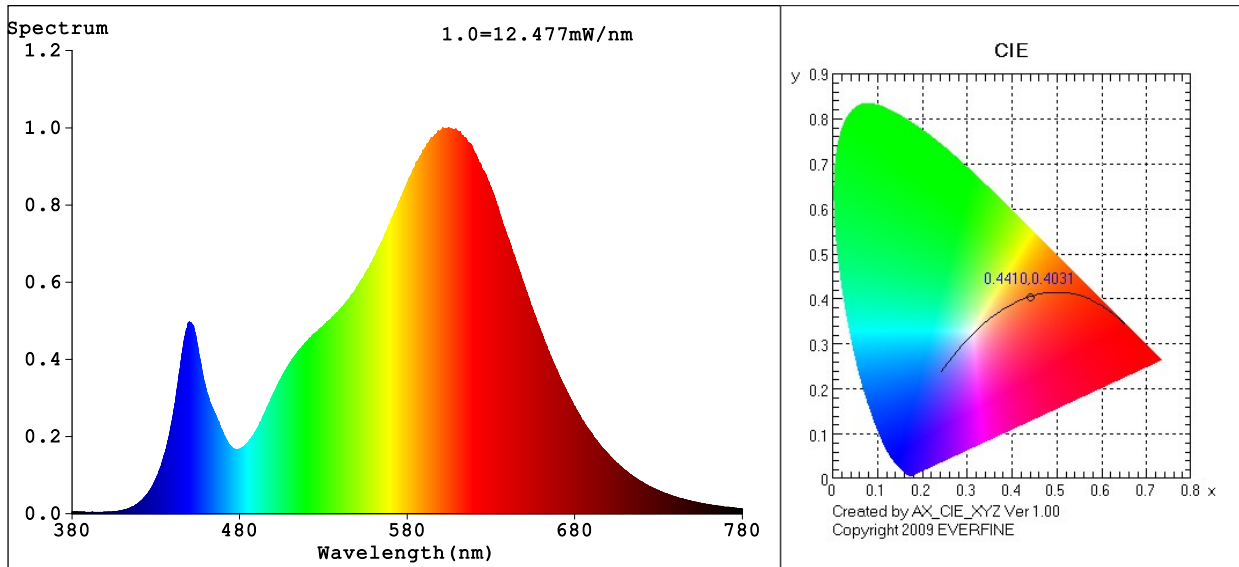
Lifespan Data

L70	15,000h
Switching Cycles	15,000

Compliance Data

EMI	Yes
RCM	N/A
Mercury Content	0mg

Spectrum Test Report



Color Parameters:

Chromaticity Coordinate: $x=0.4410$ $y=0.4031$ / $u'=0.2536$ $v'=0.5216$
 CCT=2925K (Duv=-0.0009) Dominant WL:Ld =583.5nm WL:Lc = --nm Purity=53.4%
 Ratio:R=23.5% G=74.1% B=2.4%; Peak WL:Lp=604.8nm FWHM=123.9nm
 Render Index:Ra=82.8 AvgR=77.4 TM30:Rf=84 Rg=97

R1 =81 R2 =91 R3 =96 R4 =81 R5 =82 R6 =90 R7 =82
 R8 =59 R9 =8 R10=80 R11=81 R12=74 R13=84 R14=99 R15=74

Photo Parameters:

Flux = 598.4 lm Eff. : 100.07 lm/W Fe = 1.828 W

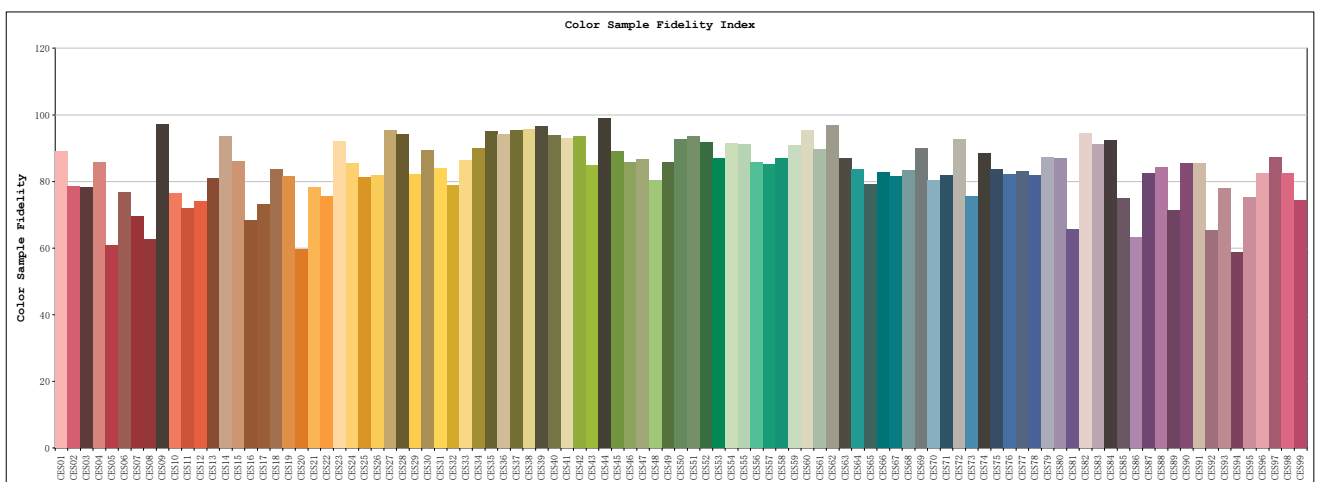
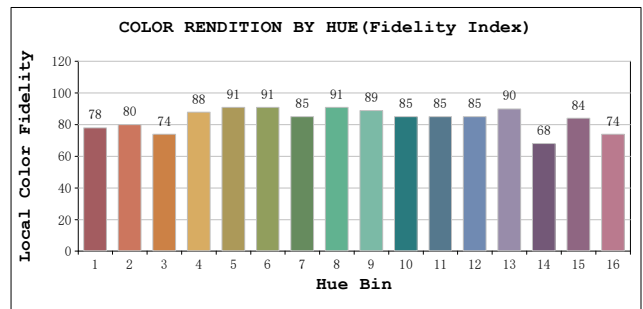
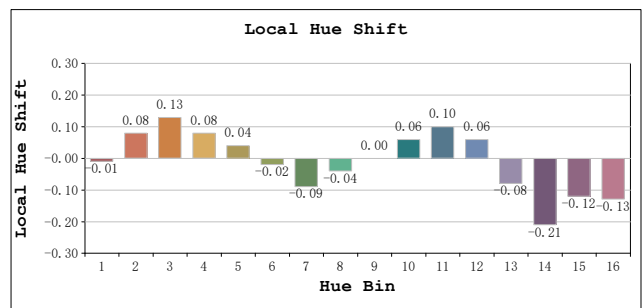
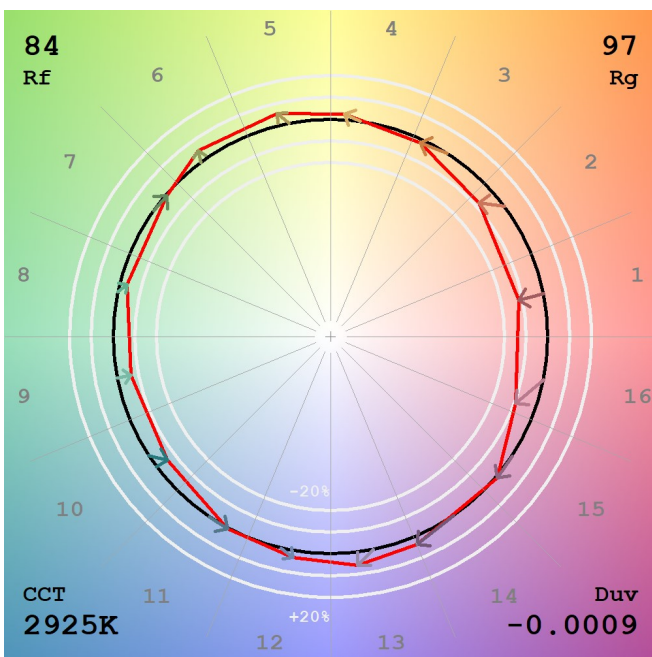
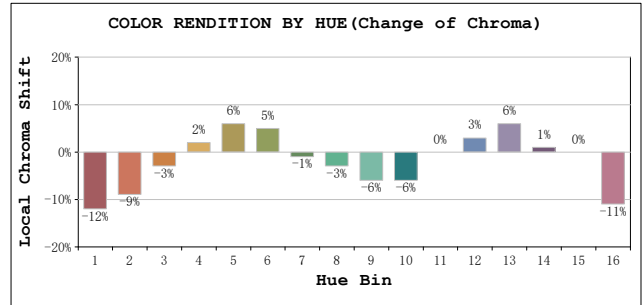
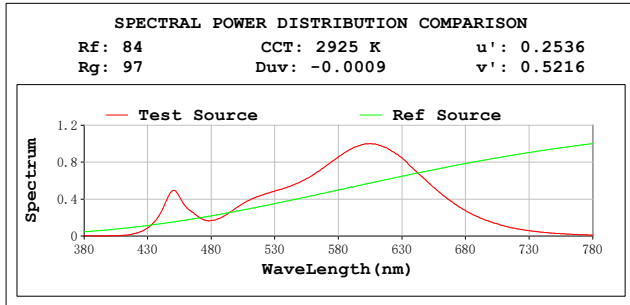
Electrical parameters:

V = 23.970 V I = 0.2495 A P = 5.980 W PF = 1.0000
 LEVEL:OUT WHITE:ANSI_3000K
 Status: Integral T = 196 ms Ip = 51085 (78%)

GBT5702

TM30

View Angle:2 Deg



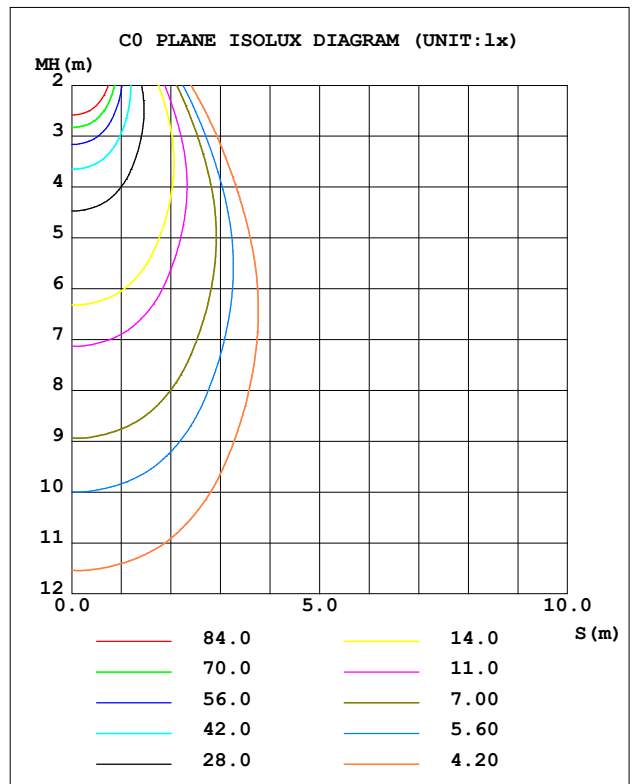
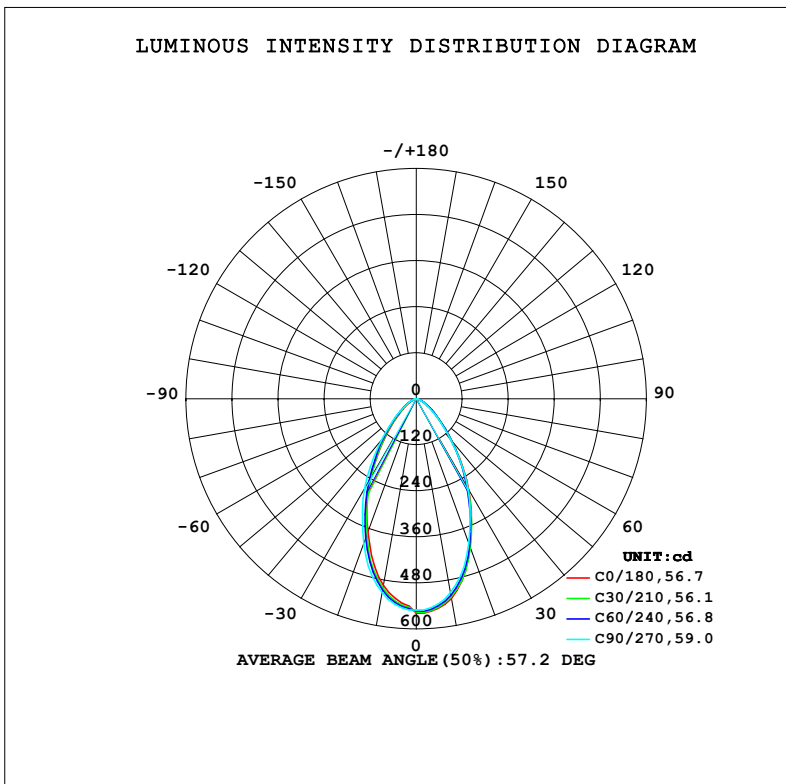
Model:AGL-560-30E60 / 3000K
 Tester:EC
 Temperature:25.3Deg
 Manufacturer:AQUALUX

Number:AGL-560-30E60 / 24V DC
 Date:2023-10-24 14:38:22
 Humidity:65.0%
 Remarks:24VDC

LUMINAIRE PHOTOMETRIC TEST REPORT

Test:U:23.783V I:0.2434A P:5.7886W PF:1.0000 Freq:0Hz		
UTHDi:0.00% ITHDi:0.00% KDisp:0 Lamp Flux:591.188x1 lm		
NAME: AGL-560-30E60	TYPE: MR16 LAMP	WEIGHT:
SPEC.: AGL-560-30E60	DIM.:	SERIAL No.: -
MFR.: AQUALUX	SUR.:	Shielding Angle:

DATA OF LAMP		PHOTOMETRIC DATA			
MODEL	LED	I _{max} (cd)	559.1	S/MH (C0/180)	0.82
NOMINAL POWER (W)	3	LOR (%)	100.0	S/MH (C90/270)	0.87
RATED VOLTAGE (V)	24	TOTAL FLUX (lm)	591.19	η UP, DN (C0-180)	0.0, 50.3
NOMINAL FLUX (lm)	591.188	CIE CLASS	DIRECT	η UP, DN (C180-360)	0.0, 49.7
LAMPS INSIDE	1	η up (%)	0.0	CIBSE SHR NOM	0.75
TEST VOLTAGE (V)	24	η down (%)	100.0	CIBSE SHR MAX	0.90



C Range: 0 - 180DEG
 C Interval: 15.0DEG
 Test Speed: HIGH
 Temperature: 20°C
 Operators: Elaine
 Test Date: 10 November 2023

γ Range: 0 - 90DEG
 γ Interval: 2.0DEG
 Test System: EVERFINE GO-SPEX500_V1 SYSTEM V2.00.473
 Humidity: 65.0%
 Test Distance: 3.100m [K=1.0000]
 Remarks: AGL-560-30E60
 6W / 3000K
 24V DC

ZONAL FLUX DIAGRAM

ZONAL FLUX DIAGRAM:

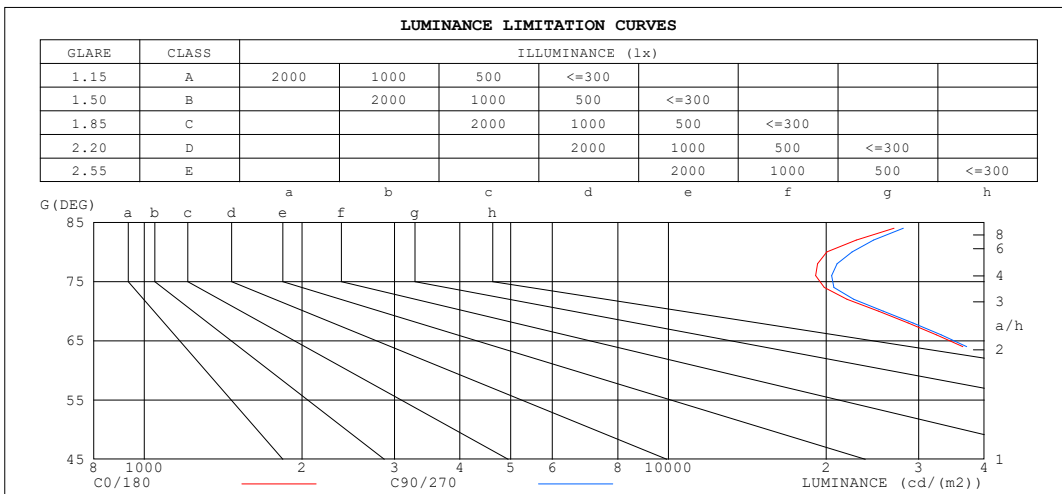
γ	C0	C45	C90	C135	C180	C225	C270	C315	γ	∅ zone	∅ total	%lum, lamp
10	528.2	522.2	513.3	504.0	494.3	504.0	513.3	522.2	0- 10	50.83	50.83	8.6,8.6
20	409.6	411.5	400.3	383.6	369.5	383.6	400.3	411.5	10- 20	128.7	179.5	30.4,30.4
30	274.7	269.6	269.1	240.3	240.5	240.3	269.1	269.6	20- 30	149.1	328.6	55.6,55.6
40	143.7	146.6	142.1	128.9	118.4	128.9	142.1	146.6	30- 40	120.9	449.5	76,76
50	65.40	70.54	64.74	61.43	52.87	61.43	64.74	70.54	40- 50	74.25	523.8	88.6,88.6
60	28.18	33.04	28.51	28.18	22.81	28.18	28.51	33.04	50- 60	39.27	563.0	95.2,95.2
70	10.80	12.96	11.03	10.16	7.847	10.16	11.03	12.96	60- 70	18.71	581.8	98.4,98.4
80	4.371	4.210	4.883	3.796	3.607	3.796	4.883	4.210	70- 80	6.984	588.7	99.6,99.6
90	0.0087	0.0189	0.0139	0.0095	0.0119	0.0095	0.0139	0.0189	80- 90	2.451	591.2	100,100
100									90-100			
110									100-110			
120									110-120			
130									120-130			
140									130-140			
150									140-150			
160									150-160			
170									160-170			
180									170-180			
DEG	LUMINOUS INTENSITY:cd								UNIT:lm			

C Range: 0 - 180DEG
 C Interval: 15.0DEG
 Test Speed: HIGH
 Temperature:20°C
 Operators:Elaine
 Test Date:10 November 2023

γ Range: 0 - 90DEG
 γ Interval: 2.0DEG
 Test System:EVERFINE GO-SPEX500_V1 SYSTEM V2.00.473
 Humidity:65.0%
 Test Distance:3.100m [K=1.0000]
 Remarks: AGL-560-30E60
 6W / 3000K
 24V DC

LUMINANCE LIMITATION CURVES

Test:U:23.783V I:0.2434A P:5.7886W PF:1.0000 Freq:0Hz UTHDi:0.00% ITHDi:0.00% KDisp:0 Lamp Flux:591.188x1 lm		
NAME: AGL-560-30E60	TYPE: MR16 LAMP	WEIGHT:
SPEC.: AGL-560-30E60	DIM.:	SERIAL No.: -
MFR.: AQUALUX	SUR.:	Shielding Angle:



LUMINANCE cd/(m2)		
G (DEG)	C0/180	C90/270
85	32303	33624
80	20042	22387
75	21096	22024
70	25135	25685
65	37807	38406
60	44875	45398
55	64761	64092
50	81005	80185
45	118879	118839

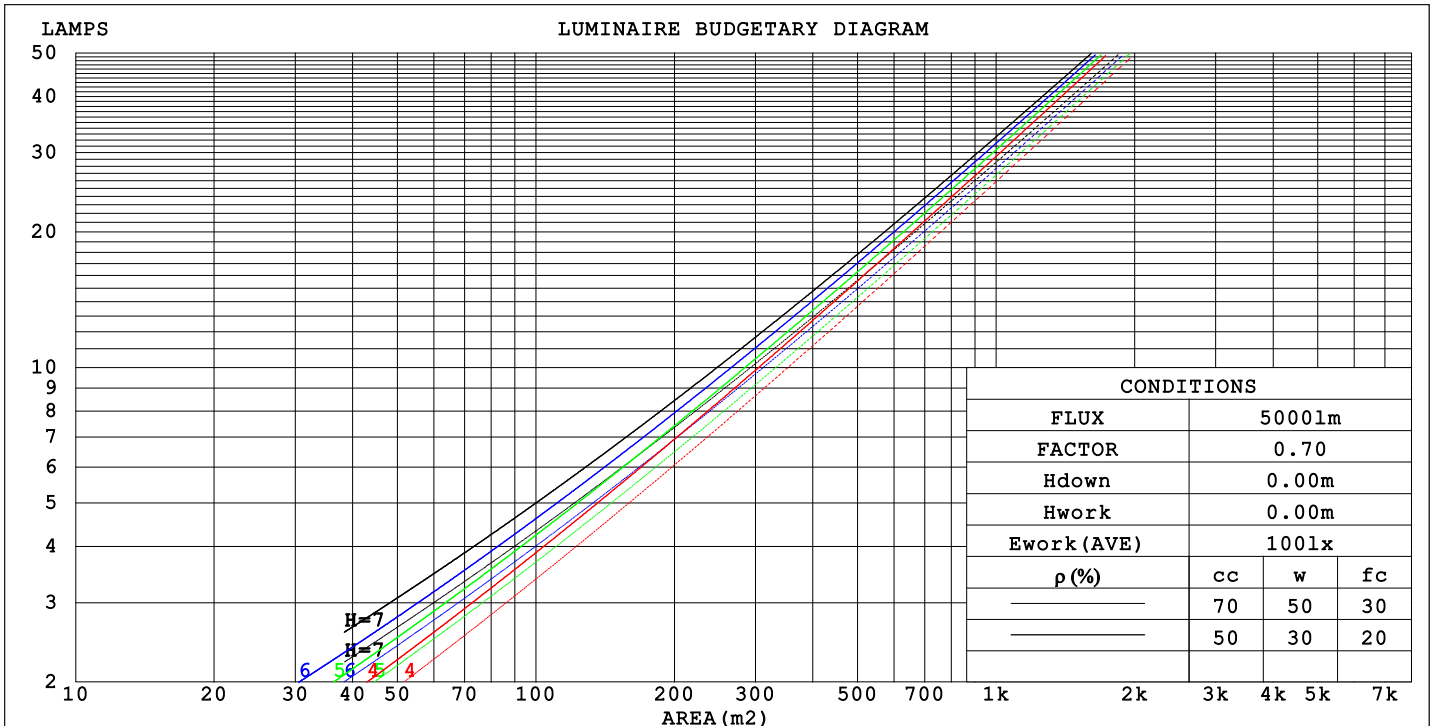
C Range: 0 - 180DEG
 C Interval: 15.0DEG
 Test Speed: HIGH
 Temperature: 20°C
 Operator: Elaine
 Test Date: 10 November 2023

γ Range: 0 - 90DEG
 γ Interval: 2.0DEG
 Test System: EVERFINE GO-SPEX500_V1 SYSTEM V2.00.473
 Humidity: 65.0%
 Test Distance: 3.100m [K=1.0000]
 Remarks: AGL-560-30E60
 6W / 3000K
 24V DC

CU AND LUMINAIRE BUDGETARY ESTIMATE DIAGRAM

Test:U:23.783V I:0.2434A P:5.7886W PF:1.0000 Freq:0Hz		
UTHDi:0.00% ITHDi:0.00% KDisp:0 Lamp Flux:591.188x1 lm		
NAME: AGL-560-30E60	TYPE: MR16 LAMP	WEIGHT:
SPEC.: AGL-560-30E60	DIM.:	SERIAL No.: -
MFR.: AQUALUX	SUR.:	Shielding Angle:

pcc	80%			70%			50%			30%			10%			0
	50%	30%	10%	50%	30%	10%	50%	30%	10%	50%	30%	10%	50%	30%	10%	
p _w																
p _{fc}	20%			20%			20%			20%			20%			0
RCR	RCR:Room Cavity Ratio															
	Coefficients of Utilization (CU)															
0.0	1.19	1.19	1.19	1.16	1.16	1.16	1.11	1.11	1.11	1.06	1.06	1.06	1.02	1.02	1.02	1.00
1.0	1.09	1.06	1.03	1.07	1.04	1.02	1.03	1.01	.99	.99	.97	.96	.95	.94	.93	.91
2.0	.00	.95	.91	.98	.93	.90	.95	.91	.88	.91	.88	.86	.89	.86	.84	.82
3.0	.91	.85	.81	.90	.84	.80	.87	.83	.79	.85	.81	.77	.82	.79	.76	.74
4.0	.84	.78	.73	.83	.77	.72	.81	.75	.71	.78	.74	.70	.77	.73	.70	.68
5.0	.78	.71	.66	.77	.70	.65	.75	.69	.65	.73	.68	.64	.71	.67	.64	.62
6.0	.72	.65	.60	.71	.65	.60	.70	.64	.59	.68	.63	.59	.67	.62	.59	.57
7.0	.67	.60	.55	.66	.60	.55	.65	.59	.55	.64	.58	.54	.62	.58	.54	.53
8.0	.63	.56	.51	.62	.55	.51	.61	.55	.51	.60	.54	.50	.59	.54	.50	.49
9.0	.59	.52	.47	.58	.52	.47	.57	.51	.47	.56	.51	.47	.55	.50	.47	.45
10.0	.55	.49	.44	.55	.48	.44	.54	.48	.44	.53	.48	.44	.52	.47	.44	.42



C Range: 0 - 180DEG
 C Interval: 15.0DEG
 Test Speed: HIGH
 Temperature: 20°C
 Operators: Elaine
 Test Date: 10 November 2023

γ Range: 0 - 90DEG
 γ Interval: 2.0DEG
 Test System: EVERFINE GO-SPEX500_V1 SYSTEM V2.00.473
 Humidity: 65.0%
 Test Distance: 3.100m [K=1.0000]
 Remarks: AGL-560-30E60
 6W / 3000K
 24V DC

WEC AND CCEC

Test:U:23.783V I:0.2434A P:5.7886W PF:1.0000 Freq:0Hz		
UTHDi:0.00% ITHDi:0.00% KDisp:0 Lamp Flux:591.188x1 lm		
NAME: AGL-560-30E60	TYPE: MR16 LAMP	WEIGHT:
SPEC.: AGL-560-30E60	DIM.:	SERIAL No.: -
MFR.: AQUALUX	SUR.:	Shielding Angle:

ρcc	80%			70%			50%			30%			10%			0
ρw	50%	30%	10%	50%	30%	10%	50%	30%	10%	50%	30%	10%	50%	30%	10%	0
ρfc	20%			20%			20%			20%			20%			0
RCR	RCR:Room Cavity Ratio						Wall Exitance Coefficients (WEC)									
0.0																
1.0	.212	.121	.038	.205	.117	.037	.193	.110	.035	.181	.104	.033	.170	.099	.032	
2.0	.204	.112	.034	.198	.109	.034	.187	.104	.032	.177	.099	.031	.168	.095	.030	
3.0	.193	.103	.031	.188	.101	.030	.179	.097	.029	.170	.093	.029	.162	.090	.028	
4.0	.183	.095	.028	.179	.093	.028	.170	.090	.027	.163	.087	.026	.156	.085	.026	
5.0	.173	.088	.026	.169	.087	.025	.162	.084	.025	.155	.082	.024	.149	.080	.024	
6.0	.164	.082	.024	.160	.081	.023	.154	.079	.023	.148	.077	.023	.142	.075	.022	
7.0	.155	.077	.022	.152	.076	.022	.147	.074	.021	.141	.072	.021	.136	.071	.021	
8.0	.147	.072	.020	.145	.071	.020	.140	.070	.020	.135	.068	.020	.130	.067	.019	
9.0	.140	.068	.019	.138	.067	.019	.133	.066	.019	.129	.065	.018	.125	.063	.018	
10.0	.134	.064	.018	.131	.063	.018	.127	.062	.018	.123	.061	.017	.120	.060	.017	

ρcc	80%			70%			50%			30%			10%			0
ρw	50%	30%	10%	50%	30%	10%	50%	30%	10%	50%	30%	10%	50%	30%	10%	0
ρfc	20%			20%			20%			20%			20%			0
RCR	RCR:Room Cavity Ratio						Ceiling Cavity Exitance Coefficients (CCEC)									
0.0	.190	.190	.190	.163	.163	.163	.111	.111	.111	.064	.064	.064	.020	.020	.020	
1.0	.174	.157	.142	.148	.135	.122	.102	.093	.085	.058	.054	.049	.019	.017	.016	
2.0	.161	.132	.109	.137	.114	.094	.094	.079	.066	.054	.046	.038	.017	.015	.013	
3.0	.150	.114	.085	.128	.098	.074	.088	.068	.052	.051	.040	.031	.016	.013	.010	
4.0	.141	.100	.068	.121	.086	.059	.083	.060	.042	.048	.035	.025	.015	.011	.008	
5.0	.132	.088	.056	.114	.076	.048	.078	.053	.034	.045	.031	.020	.015	.010	.007	
6.0	.125	.079	.046	.108	.069	.040	.074	.048	.029	.043	.028	.017	.014	.009	.006	
7.0	.119	.072	.039	.102	.062	.034	.071	.044	.024	.041	.026	.014	.013	.008	.005	
8.0	.113	.066	.034	.097	.057	.029	.067	.040	.021	.039	.024	.012	.013	.008	.004	
9.0	.108	.061	.029	.093	.053	.025	.064	.037	.018	.038	.022	.011	.012	.007	.004	
10.0	.103	.057	.026	.089	.049	.022	.062	.035	.016	.036	.020	.010	.012	.007	.003	

C Range: 0 - 180DEG
 C Interval: 15.0DEG
 Test Speed: HIGH
 Temperature:20°C
 Operators:Elaine
 Test Date:10 November 2023

γ Range: 0 - 90DEG
 γ Interval: 2.0DEG
 Test System:EVERFINE GO-SPEX500_V1 SYSTEM V2.00.473
 Humidity:65.0%
 Test Distance:3.100m [K=1.0000]
 Remarks: AGL-560-30E60
 6W / 3000K
 24V DC

UGR(Unified Glare Rating) Table

Test:U:23.783V I:0.2434A P:5.7886W PF:1.0000 Freq:0Hz		
UTHDi:0.00% ITHDi:0.00% KDisp:0 Lamp Flux:591.188x1 lm		
NAME: AGL-560-30E60	TYPE: MR16 LAMP	WEIGHT:
SPEC.: AGL-560-30E60	DIM.:	SERIAL No.: -
MFR.: AQUALUX	SUR.:	Shielding Angle:

ceiling/cavity	0.7	0.7	0.5	0.5	0.3	0.7	0.7	0.5	0.5	0.3
walls	0.5	0.3	0.5	0.3	0.3	0.5	0.3	0.5	0.3	0.3
working plane	0.2	0.2	0.2	0.2	0.2	0.2	0.2	0.2	0.2	0.2

Room dimensions		Viewed crosswise					Viewed endwise				
x = 2H	y = 2H	27.7	28.8	27.9	29.0	29.1	27.6	28.8	27.9	28.9	29.1
	3H	27.8	28.9	28.1	29.1	29.3	27.8	28.9	28.1	29.1	29.3
	4H	27.9	28.8	28.2	29.1	29.3	27.9	28.8	28.1	29.1	29.3
	6H	27.9	28.8	28.2	29.0	29.3	27.9	28.8	28.2	29.0	29.3
	8H	27.9	28.8	28.2	29.0	29.3	27.9	28.8	28.2	29.1	29.3
	12H	27.9	28.8	28.3	29.1	29.3	28.0	28.8	28.3	29.1	29.4
4H	2H	27.8	28.7	28.0	29.0	29.2	27.7	28.7	28.0	28.9	29.2
	3H	28.0	28.9	28.4	29.2	29.5	28.0	28.9	28.4	29.2	29.4
	4H	28.1	28.9	28.5	29.2	29.5	28.1	28.9	28.5	29.2	29.5
	6H	28.2	28.9	28.6	29.2	29.5	28.2	28.9	28.6	29.2	29.5
	8H	28.2	28.9	28.6	29.2	29.6	28.2	28.9	28.6	29.2	29.6
	12H	28.3	28.9	28.7	29.3	29.7	28.3	28.9	28.8	29.3	29.7
8H	4H	28.1	28.7	28.5	29.1	29.4	28.1	28.7	28.5	29.0	29.4
	6H	28.2	28.7	28.6	29.1	29.5	28.2	28.7	28.6	29.1	29.5
	8H	28.3	28.8	28.8	29.2	29.6	28.3	28.8	28.8	29.2	29.6
	12H	28.5	28.9	29.0	29.3	29.8	28.5	28.9	29.0	29.3	29.8
12H	4H	28.0	28.6	28.5	29.0	29.4	28.0	28.6	28.4	29.0	29.4
	6H	28.2	28.6	28.6	29.1	29.5	28.2	28.6	28.6	29.1	29.5
	8H	28.4	28.7	28.8	29.2	29.7	28.3	28.7	28.8	29.2	29.7

Variations with the observer position at spacings(CIE Pub.117):		
S = 1.0H	+ 1.1 / - 1.7	+ 1.1 / - 1.6
1.5H	+ 1.3 / - 1.1	+ 1.3 / - 1.1
2.0H	+ 2.2 / - 1.7	+ 2.1 / - 1.6

CIE Pub.117, 591.2 lm Total Lamp Luminous Flux Correct (8log(F/F0) = -1.8)
 Area: 0.001256 m2

C Range: 0 - 180DEG
 C Interval: 15.0DEG
 Test Speed: HIGH
 Temperature:20°C
 Operators:Elaine
 Test Date:10 November 2023

γ Range: 0 - 90DEG
 γ Interval: 2.0DEG
 Test System:EVERFINE GO-SPEX500_V1 SYSTEM V2.00.473
 Humidity:65.0%
 Test Distance:3.100m [K=1.0000]
 Remarks: AGL-560-30E60
 6W / 3000K
 24V DC

UTILIZATION FACTORS TABLE

Test:U:23.783V I:0.2434A P:5.7886W PF:1.0000 Freq:0Hz		
UTHDi:0.00% ITHDi:0.00% KDisp:0 Lamp Flux:591.188x1 lm		
NAME: AGL-560-30E60	TYPE: MR16 LAMP	WEIGHT:
SPEC.: AGL-560-30E60	DIM.:	SERIAL No.: -
MFR.: AQUALUX	SUR.:	Shielding Angle:

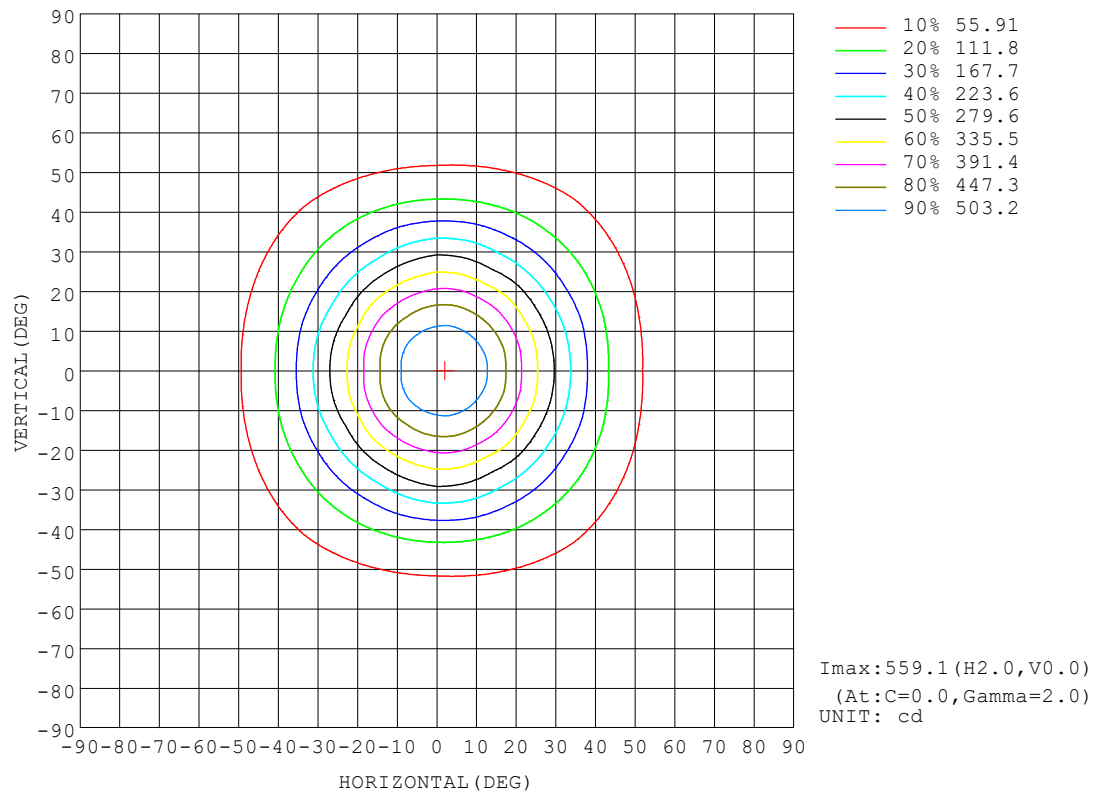
REFLECTANCE										
Ceiling	0.8	0.8	0.8	0.7	0.7	0.7	0.5	0.5	0.5	0
Walls	0.7	0.5	0.3	0.7	0.5	0.3	0.7	0.5	0.3	0
Working plane	0.2	0.2	0.2	0.2	0.2	0.2	0.2	0.2	0.2	0
ROOM INDEX	UTILIZATION FACTORS (PERCENT) $k(RI) \times RCR = 5$									
k = 0.60	76	68	63	76	68	63	75	67	63	58
0.80	85	77	72	84	77	72	83	76	72	67
1.00	92	84	79	91	84	79	89	84	79	74
1.25	97	90	85	96	89	85	94	88	84	79
1.50	100	94	90	99	93	89	97	92	88	83
2.00	105	99	95	103	98	94	100	96	93	87
2.50	107	102	98	105	101	97	102	98	95	89
3.00	109	105	101	107	103	100	104	100	98	91
4.00	112	108	105	109	106	104	106	103	101	93
5.00	113	110	107	111	108	106	107	105	103	95
ROOM INDEX	UF(total)									Direct
According to DIN EN 13032-2 2004			Suspended				SHRNOM = 1.25			

C Range: 0 - 180DEG
 C Interval: 15.0DEG
 Test Speed: HIGH
 Temperature:20°C
 Operators:Elaine
 Test Date:10 November 2023

γ Range: 0 - 90DEG
 γ Interval: 2.0DEG
 Test System:EVERFINE GO-SPEX500_V1 SYSTEM V2.00.473
 Humidity:65.0%
 Test Distance:3.100m [K=1.0000]
 Remarks: AGL-560-30E60
 6W / 3000K
 24V DC

ISOCANDELA DIAGRAM

Test:U:23.783V I:0.2434A P:5.7886W PF:1.0000 Freq:0Hz UTHDi:0.00% ITHDi:0.00% KDisp:0 Lamp Flux:591.188x1 lm		
NAME: AGL-560-30E60	TYPE: MR16 LAMP	WEIGHT:
SPEC.: AGL-560-30E60	DIM.:	SERIAL No.: -
MFR.: AQUALUX	SUR.:	Shielding Angle:

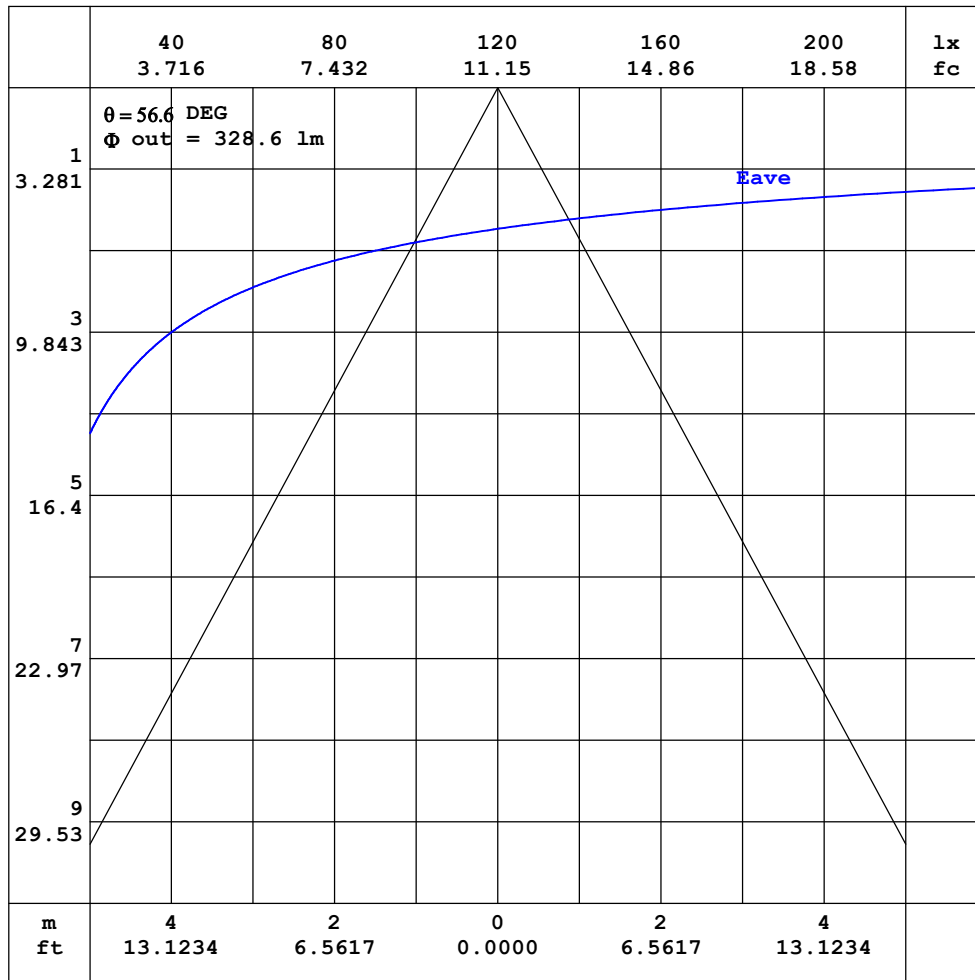


C Range: 0 - 180DEG
 C Interval: 15.0DEG
 Test Speed: HIGH
 Temperature:20°C
 Operators:Elaine
 Test Date:10 November 2023

γ Range: 0 - 90DEG
 γ Interval: 2.0DEG
 Test System:EVERFINE GO-SPEX500_V1 SYSTEM V2.00.473
 Humidity:65.0%
 Test Distance:3.100m [K=1.0000]
 Remarks: AGL-560-30E60
 6W / 3000K
 24V DC

AAI CURVES

Test:U:23.783V I:0.2434A P:5.7886W PF:1.0000 Freq:0Hz		
UTHDi:0.00% ITHDi:0.00% KDisp:0 Lamp Flux:591.188x1 lm		
NAME: AGL-560-30E60	TYPE: MR16 LAMP	WEIGHT:
SPEC.: AGL-560-30E60	DIM.:	SERIAL No.: -
MFR.: AQUALUX	SUR.:	Shielding Angle:



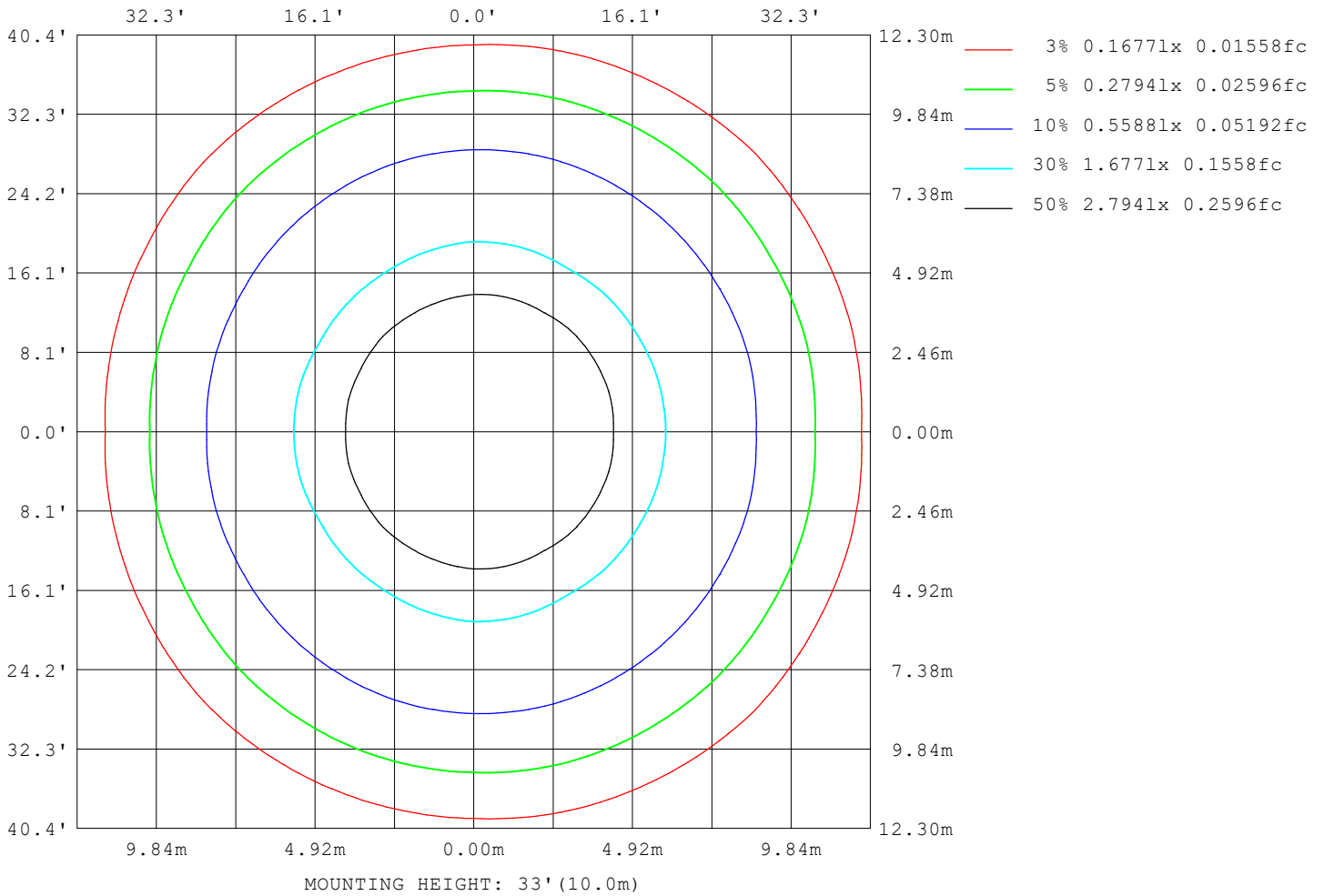
Note: The Curves indicate the illuminated area and the average illumination when the luminaire is at different distance.

C Range: 0 - 180DEG
 C Interval: 15.0DEG
 Test Speed: HIGH
 Temperature: 20°C
 Operators: Elaine
 Test Date: 10 November 2023

γ Range: 0 - 90DEG
 γ Interval: 2.0DEG
 Test System: EVERFINE GO-SPEX500_V1 SYSTEM V2.00.473
 Humidity: 65.0%
 Test Distance: 3.100m [K=1.0000]
 Remarks: AGL-560-30E60
 6W / 3000K
 24V DC

ISOLUX DIAGRAM

Test:U:23.783V I:0.2434A P:5.7886W PF:1.0000 Freq:0Hz		
UTHDi:0.00% ITHDi:0.00% KDisp:0 Lamp Flux:591.188x1 lm		
NAME: AGL-560-30E60	TYPE: MR16 LAMP	WEIGHT:
SPEC.: AGL-560-30E60	DIM.:	SERIAL No.: -
MFR.: AQUALUX	SUR.:	Shielding Angle:



C Range: 0 - 180DEG
 C Interval: 15.0DEG
 Test Speed: HIGH
 Temperature: 20°C
 Operators: Elaine
 Test Date: 10 November 2023

γ Range: 0 - 90DEG
 γ Interval: 2.0DEG
 Test System: EVERFINE GO-SPEX500_V1 SYSTEM V2.00.473
 Humidity: 65.0%
 Test Distance: 3.100m [K=1.0000]
 Remarks: AGL-560-30E60
 6W / 3000K
 24V DC

LED Avg.L Report

Test:U:23.783V I:0.2434A P:5.7886W PF:1.0000 Freq:0Hz UTHDi:0.00% ITHDi:0.00% KDisp:0 Lamp Flux:591.188x1 lm		
NAME: AGL-560-30E60	TYPE: MR16 LAMP	WEIGHT:
SPEC.: AGL-560-30E60	DIM.:	SERIAL No.: -
MFR.: AQUALUX	SUR.:	Shielding Angle:

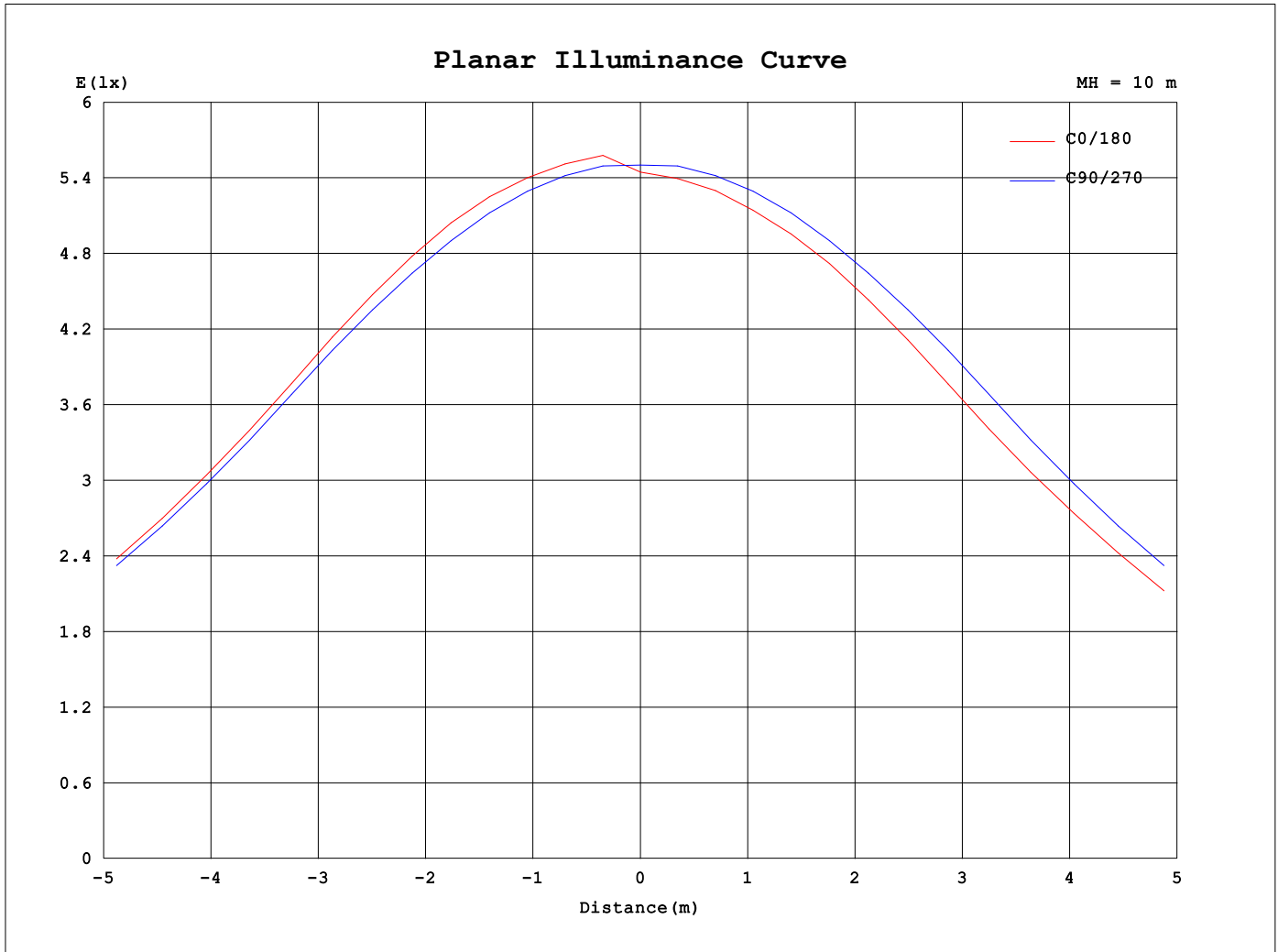
AvgL	cd/m2
L_0~180 (65) av	30365
L_0~180 (75) av	17257
L_0~180 (85) av	19807
L_90~270 (65) av	35033
L_90~270 (75) av	20412
L_90~270 (85) av	28570
L_45 (65) av	37483
L_45 (75) av	19647
L_45 (85) av	22626

Standard: GB/T 29293-2012

C Range: 0 - 180DEG
 C Interval: 15.0DEG
 Test Speed: HIGH
 Temperature:20°C
 Operators:Elaine
 Test Date:10 November 2023

γ Range: 0 - 90DEG
 γ Interval: 2.0DEG
 Test System:EVERFINE GO-SPEX500_V1 SYSTEM V2.00.473
 Humidity:65.0%
 Test Distance:3.100m [K=1.0000]
 Remarks: AGL-560-30E60
 6W / 3000K
 24V DC

Planar Illuminance Curve



C Range: 0 - 180DEG
 C Interval: 15.0DEG
 Test Speed: HIGH
 Temperature: 20°C
 Operator: Elaine
 Test Date: 10 November 2023

γ Range: 0 - 90DEG
 γ Interval: 2.0DEG
 Test System: EVERFINE GO-SPEX500_V1 SYSTEM V2.00.473
 Humidity: 65.0%
 Test Distance: 3.100m [K=1.0000]
 Remarks: AGL-560-30E60
 6W / 3000K
 24V DC

LUMINOUS DISTRIBUTION INTENSITY DATA

Test:U:23.783V I:0.2434A P:5.7886W PF:1.0000 Freq:0Hz		
UTHdi:0.00% ITHdi:0.00% KDisp:0 Lamp Flux:591.188x1 lm		
NAME: AGL-560-30E60	TYPE: MR16 LAMP	WEIGHT:
SPEC.: AGL-560-30E60	DIM.:	SERIAL No.: -
MFR.: AQUALUX	SUR.:	Shielding Angle:

Table--1

UNIT: cd

C (DEG) \ γ (DEG)	0	15	30	45	60	75	90	105	120	135	150	165	180	195	210	225	240	255	270
0	559	556	556	553	553	551	550	549	548	547	546	545	545	545	546	547	548	549	550
5	555	554	554	551	550	548	546	544	542	540	539	536	534	536	539	540	542	544	546
10	528	528	524	522	520	518	513	510	506	504	500	497	494	497	500	504	506	510	513
15	490	491	489	486	483	481	477	471	465	464	460	456	450	456	460	464	465	471	477
20	410	414	413	412	408	407	400	392	386	384	377	375	369	375	377	384	386	392	400
25	354	358	355	356	348	349	346	336	329	326	317	320	318	320	317	326	329	336	346
30	275	273	269	270	264	269	269	257	246	240	235	240	240	240	235	240	246	257	269
35	221	220	215	214	213	218	216	206	195	192	187	189	186	189	187	192	195	206	216
40	144	148	146	147	146	145	142	139	134	129	124	122	118	122	124	129	134	139	142
45	106	109	110	109	110	108	106	103	99.7	96.3	91.5	89.2	86.7	89.2	91.5	96.3	99.7	103	106
50	65.4	68.1	68.9	70.5	69.0	67.6	64.7	63.5	62.5	61.4	57.9	55.1	52.9	55.1	57.9	61.4	62.5	63.5	64.7
55	46.7	48.9	50.6	52.3	50.6	48.7	46.2	45.5	45.3	45.2	42.3	39.5	37.4	39.5	42.3	45.2	45.3	45.5	46.2
60	28.2	29.9	31.6	33.0	31.7	29.9	28.5	28.0	28.0	28.2	26.2	24.3	22.8	24.3	26.2	28.2	28.0	28.0	28.5
65	20.1	21.4	22.7	24.1	22.8	21.5	20.4	20.0	19.6	19.7	18.1	16.6	15.5	16.6	18.1	19.7	19.6	20.0	20.4
70	10.8	11.4	12.5	13.0	12.4	11.5	11.0	10.6	10.2	10.2	9.15	8.27	7.85	8.27	9.15	10.2	10.2	10.6	11.0
75	6.86	7.19	7.57	7.98	7.49	7.18	7.16	6.78	6.44	6.31	5.75	5.39	5.34	5.39	5.75	6.31	6.44	6.78	7.16
80	4.37	4.42	4.27	4.21	4.26	4.37	4.88	4.39	4.00	3.80	3.67	3.65	3.61	3.65	3.67	3.80	4.00	4.39	4.88
85	3.54	3.59	3.41	3.33	3.26	3.34	3.68	3.28	2.80	2.61	2.40	2.25	2.01	2.25	2.40	2.61	2.80	3.28	3.68
90	0.01	0.01	0.02	0.02	0.01	0.01	0.01	0.01	0.01	0.01	0.02	0.01	0.01	0.01	0.02	0.01	0.01	0.01	0.01

C Range: 0 - 180DEG
 C Interval: 15.0DEG
 Test Speed: HIGH
 Temperature:20°C
 Operators:Elaine
 Test Date:10 November 2023

γ Range: 0 - 90DEG
 γ Interval: 2.0DEG
 Test System:EVERFINE GO-SPEX500_V1 SYSTEM V2.00.473
 Humidity:65.0%
 Test Distance:3.100m [K=1.0000]
 Remarks: AGL-560-30E60
 6W / 3000K
 24V DC

